

Elan Physique Unit

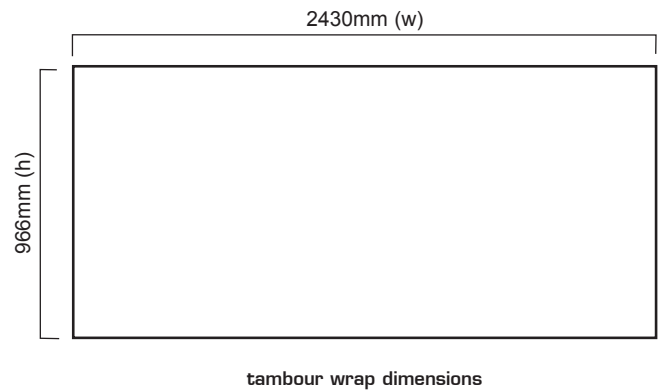
PK 182

Distinctive styling combined with ease of use make the Elan unit an ideal addition to any Exhibition stand.



features & benefits

- Flat pack furniture constructed from composite materials and flexible MDF tambour
- Easy to transport and quick to assemble
- No tools required
- Internal storage area
- Load bearing upto 75kgs approx
- Additional accessories available



hardware specifications

Hardware Dimensions (mm)
1000 (h) x 1000 (w) x 550 (d)

Weight:
18.5kg approx

Carry bag/case Dimensions (mm):
1050 x 650 x 160

wrap specifications

Base Wrap Dimensions (mm):
966 (h) x 2430 (w)

If applying a graphic to the wrap, an allowance should be made to its size to accommodate material type, thickness etc.

additional info

Availability:
Choice of fabric wrap colours.
Laminate colours available in black, beech or rosewood.

Optional accessories:
Carry bags or cases, 50w LV Jack socket lighting, Internal shelving, aperture cutouts.

We are continually improving and modifying our product range and reserve the right to vary the specifications without prior notice. All dimensions and weights quoted are approximate and we accept no responsibility for variance. E&OE.

Assembly Instructions



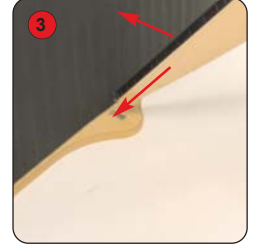
Kit includes: Top, tambour wrap, front 'fin' and base



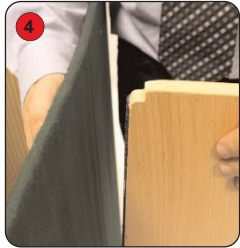
1 Place the base on the floor with the ridging uppermost. Attach the tambour to the base.



2 Make sure that the hook fastener on both the tambour and base fit securely together.



3 Slot the narrow end of the 'fin' into the hole on the front of the base.



4 Push the side of the 'fin' against the tambour wrap to secure the fit.



5 Place the top onto the tambour wrap and secure using the hook fastener.



6 It may be necessary to open some of the wrap to fit the top onto the hook fastener.



Other products in our Physique range include:



Double D

Multi-function popular style workstation.



Single D

Designed to add useful counter space to any display.



Urban

Complete with clear acrylic display shelf.

Physique Graphic

PTXXXX



'Twist & Lock' - an innovation for the Physique range of Portable furniture

Physique Graphic incorporates a unique **Twist & Lock** pole system to create an internal structure that strengthens the unit without the need for a tambour wrap. This allows graphic wraps to be applied directly, creating a cleaner more professional finish. As there is no need for tambour, the unit is also lighter and more portable.

If you require additional load bearing capacity for traditional tambour wrap units, **Twist & Lock** kits are also available for use with Physique units supplied from April 2006.

features & benefits

- Flat pack furniture constructed from composite materials and 25mm aluminium tube poles (graphic wrap not supplied)
- 550micron graphic recommended
- Graphic attached with hook & loop fastener, PVC graphic strengthening strips supplied
- Strong and durable
- Approx 1/4 lighter than traditional tambour wrap units
- Quick and easy to assemble, no tools required
- Available for most Physique designs

hardware specifications

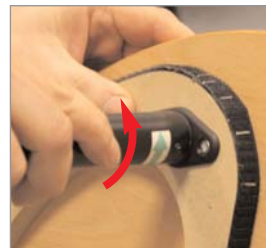
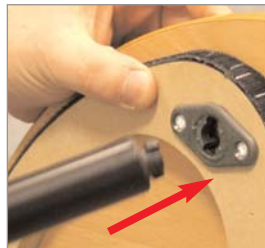
Weight (Twist & Lock Kit):

1kg approx

Graphic Wrap Dimensions

As per Physique wrap specifications

Twist & Lock

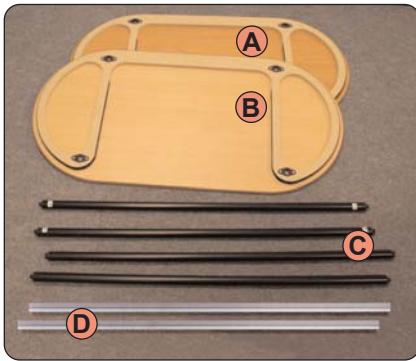


To fix poles to the Physique top and base, simply place the pole into the lock and twist to lock into place.

We are continually improving and modifying our product range and reserve the right to vary the specifications without prior notice. All dimensions and weights quoted are approximate and we accept no responsibility for variance. E&OE.

UJ189U REV 1 04/06

Assembly Instructions



Kit includes:

A/B) Physique top and base with inset locks

C) Twist and lock poles x4

D) Self-adhesive graphic strengthening strips x2



The easiest way to fix the poles is to build the unit on it's side.

1) Take a pole (C) and insert the end with the **red** arrow into the lock on the top of the Physique unit (A).



4)

Fix the remaining poles in the same way.

2) Insert the other end of the pole with the **green** arrow into the lock in the base B. The top and base need to be lined up for the lock to work. **3)** Once they are lined up, twist the pole in the direction of the arrows indicated to lock the pole in to place.



5) Turn the unit up onto its base



6) Prepare the graphic by fixing self-adhesive **loop** fastener along the top and bottom edges and fixing the graphic strengthening strips along the vertical inside edges.



7) Apply the graphic by wrapping round the top and base, making sure that the hook fastener on both the graphic and the unit fit securely together.



Physique Graphic is available with the following designs:

- Cosmopolitan
- Curved Workstation (full wrap)
- Curvy
- Diamond D
- Display Plinth Nests (all sizes)
- Double D (all units except with panel)
- Eclipse
- Elan
- Propeller
- Quadrant
- Round Display Plinths (all sizes)
- Single D
- Tubez
- Fab